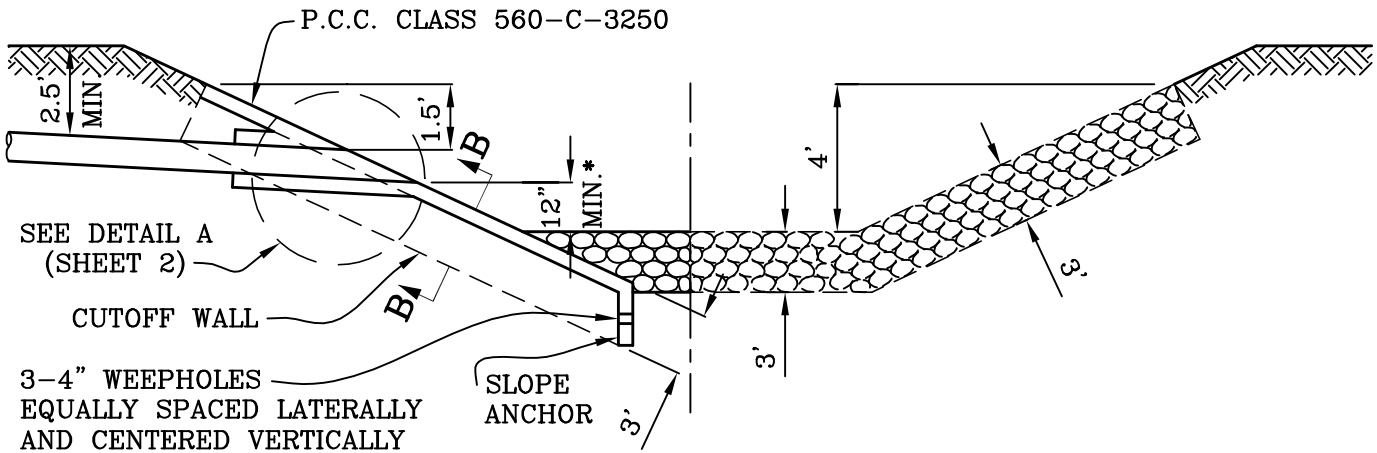


PLAN VIEW



SECTION A-A
ELEVATION
NO SCALE

CITY OF MISSION VIEJO

PIPE ENTRANCE TO
EARTH CHANNEL

STANDARD
PLAN NO.

433



APPROVED

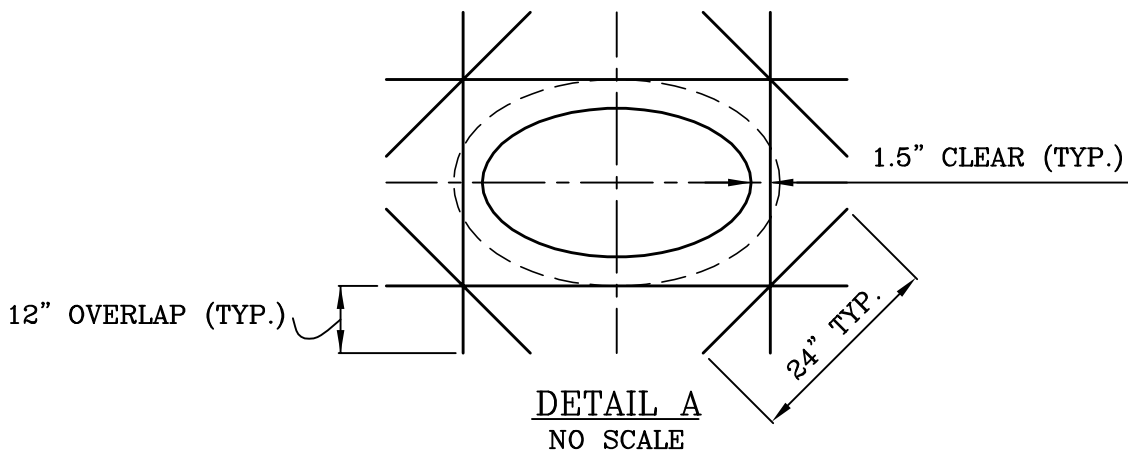
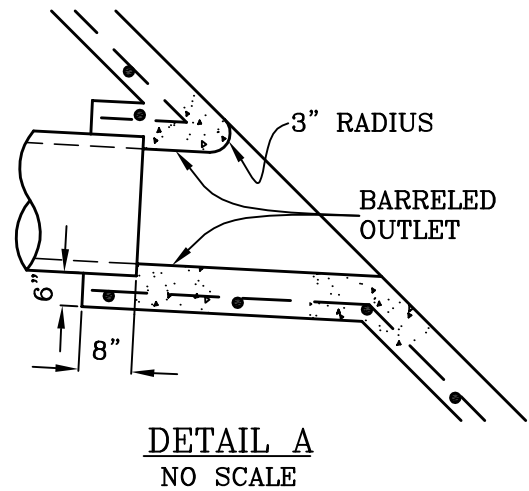
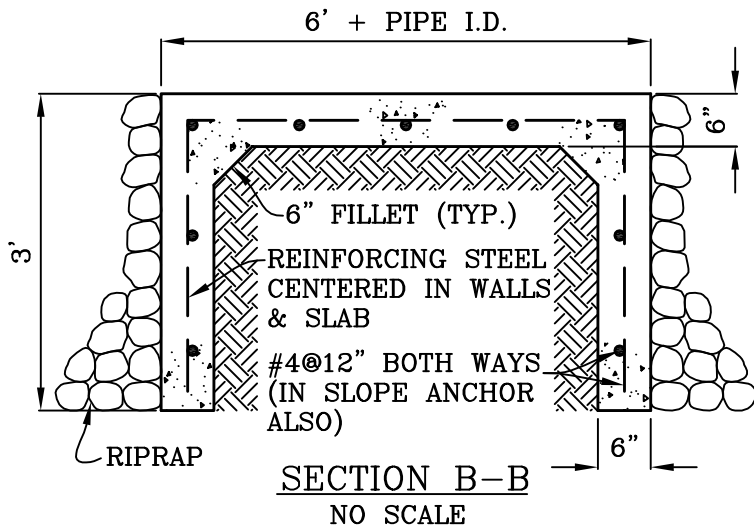
RCE 30190

DATE

Robert Anderson

9-23-03

SHT 1 OF 2



NOTES:

1. IF LATERAL FLOW EXCEEDS 10% OF THE UPSTREAM FLOW, ANGLE θ SHALL BE DETERMINED BY THE HYDRAULICS OF THE CONFLUENCE.
2. MAXIMUM SIDE SLOPE GRADIENT EQUALS 1.5 TO 1.0.
3. TERMINATE TRANSVERSE DIMENSION OF RIPRAP 10 FEET FROM TOE OF SLOPE. IF 10 FEET EXCEEDS 50% OF CHANNEL BASE WIDTH, OR CHANNEL VELOCITY EXCEEDS 10 FPS, RIPRAP "X" FEET WIDE SHALL EXTEND ACROSS INVERT AND 4 FEET UP OPPOSITE SLOPE, PER SECTION A-A.
4. INCREASE DOWNSTREAM LIMIT OF INVERT RIPRAP BLANKET BY "L" FEET IF LATERAL PIPE'S HORIZONTAL ENTRY ANGLE IS DEFLECTED FROM NORMAL. $L=2 \sin \theta$ (PIPE DIAMETER). IF "W" EXCEEDS 50% OF CHANNEL BASE WIDTH, OR CHANNEL VELOCITY EXCEEDS 10 FPS RIPRAP SHALL EXTEND ACROSS ENTIRE INVERT. (MIN. W=10 FT.)
5. PROVIDE 1.5" STEEL COVER.
6. LATERALS OF 24" OR LESS MAY BE BEVELED PIPE, 27" OR LARGER SHALL BE BARRELED.

CITY OF MISSION VIEJO

PIPE ENTRANCE TO
EARTH CHANNEL

STANDARD
PLAN NO.

433



Robert Anderson

9-23-03

APPROVED

RCE 30190

DATE

SHT 2 OF 2