

CULTURAL RESOURCES ASSESSMENT

The Lower Curtis Park Mass Grading Project

Mission Viejo, Orange County, California

Prepared for:

Phil Martin
Phil Martin & Associates
4860 Irvine Boulevard, Suite 203
Irvine, California 92620

Prepared by:

David Brunzell, M.A., RPA
Contributions by Nicholas Shepetuk, B.A.
BCR Consulting
Claremont, California 91711

Project No. PMA1901

Data Base Information:

Type of Study: Reconnaissance Survey

Resources Recorded: P-30-786

Keywords: Lower Curtis Park, Mission Viejo

USGS Quadrangles: 7.5-minute San Juan Capistrano, California (1981)



BCRCONSULTING LLC

November 18, 2019

MANAGEMENT SUMMARY

BCR Consulting LLC (BCR Consulting) is under contract to Phil Martin & Associates to conduct a Cultural Resources Assessment of the Lower Curtis Park Mass Grading Project (project) in the City of Mission Viejo, Orange County, California. A reconnaissance-level pedestrian cultural resources survey of the project site was undertaken pursuant to the California Environmental Quality Act (CEQA). A cultural resources records search, field survey, subsurface test excavation, Sacred Lands File search with the Native American Heritage Commission, and paleontological overview were conducted for the project site. The records search revealed that six cultural resource studies have taken place resulting in the recording of 22 cultural resources within a one-mile radius of the project site. All of the previous studies have assessed the project site and one cultural resource has been previously identified, partially within its boundaries. During the field survey and subsurface test excavation, BCR Consulting archaeologists did not identify any cultural resources (including prehistoric or historic archaeological sites or historic-period buildings) within the Lower Curtis Park Mass Grading Project Site. As a result, BCR Consulting recommends a finding of no impacts to historical resources under CEQA. However, since a prehistoric resource has been previously identified within the project site boundaries, the project site is considered sensitive for buried archaeological resources. Therefore, BCR Consulting recommends archaeological monitoring for any project-related excavations. The monitor should work under the supervision of a Cultural Resource Professional that meets the U.S. Secretary of the Interior Professional Qualification Standards for Archaeology. In the event of an archaeological discovery, the monitor would have the authority to temporarily divert construction excavation in the vicinity of the find until it can be evaluated for significance. In case of accidental discoveries of historic or prehistoric resources during project-related excavation when an archaeological monitor is not present, work should cease and a U.S. Secretary of the Interior Qualified Archaeologist should be notified to record and evaluate the find.

If human remains are encountered during the undertaking, State Health and Safety Code Section 7050.5 states that no further disturbance shall occur until the County Coroner has made a determination of origin and disposition pursuant to Public Resources Code Section 5097.98. The County Coroner must be notified of the find immediately. If the remains are determined to be prehistoric, the Coroner will notify the Native American Heritage Commission (NAHC), which will determine and notify a Most Likely Descendant (MLD). With the permission of the landowner or his/her authorized representative, the MLD may inspect the site of the discovery. The MLD shall complete the inspection within 48 hours of notification by the NAHC.

TABLE OF CONTENTS

MANAGEMENT SUMMARY	ii
INTRODUCTION.....	1
NATURAL SETTING.....	1
CULTURAL SETTING.....	1
PREHISTORY.....	1
ETHNOGRAPHY	5
HISTORY	5
PERSONNEL.....	6
METHODS	6
RECORDS SEARCH	6
FIELDWORK.....	6
RESULTS.....	7
RECORDS SEARCH	7
FIELDWORK.....	8
RECOMMENDATIONS.....	8
REFERENCES.....	9

APPENDICES

A: NATIVE AMERICAN SACRED LANDS FILE SEARCH	
B: PROJECT PHOTOGRAPHS	
C: PALEONTOLOGICAL OVERVIEW	
D: <u>CONFIDENTIAL</u> DPR 523 FORM	
E: <u>CONFIDENTIAL</u> EXHIBIT DEPICTING P-30-786 OVER PROJECT BOUNDARY	

FIGURES

1: Project Location Map	2
-------------------------------	---

TABLES

A: Radiocarbon Dates/Periods from Sites in Orange County	3
B: Cultural Resources Located Within One Mile of the Project Site	7

INTRODUCTION

BCR Consulting LLC (BCR Consulting) is under contract to Phil Martin & Associates to conduct a Cultural Resources Assessment of the Lower Curtis Park Mass Grading Project (project) in the City of Mission Viejo, Orange County, California. A reconnaissance-level pedestrian cultural resources survey of the project site was undertaken pursuant to the California Environmental Quality Act (CEQA). The project site is located in section 32 of Township 6 South, Range 7 West, San Bernardino Baseline and Meridian. It is depicted on the United States Geological Survey (USGS) *San Juan Capistrano, California* (1981) 7.5-minute topographic quadrangle (Figure 1).

NATURAL SETTING

The project site is located in the southwestern flank of the small peninsular range known as the Santa Ana Mountains. Local sediments are dominated by sedimentary deposits of the Upper Cretaceous, Tertiary, and Quaternary periods, obscured beneath an intermittent veneer of recent alluvium (Oates 1960, Stadum 1982). Local rainfall ranges from 5 to 15 inches annually (Jaeger and Smith 1971: 36-37), and runoff flows in a southeasterly direction to the Trabuco Creek which is adjacent to the east boundary of the project site (USGS 1997). Chaparral, coastal sage scrub, and riparian vegetation communities dominate regional flora. Key native plants include black sage, California brittlebush, California buckwheat, California sagebrush, deerweed, golden yarrow, laurel sumac, lemonadeberry, poison oak, purple sage, sticky monkeyflower, sugar bush, toyon, white sage, coastal century plant, coastal cholla, prickly-pear cactus, arroyo willow, and bulrush. These plants were utilized by local animal species, which included kangaroo rats, California horned lizard, orange-throated whiptail, San Diego horned lizard, brown-headed cowbird, California gnatcatcher, California quail, cactus wren, darkling beetle, harvester ant, and Palos Verdes blue butterfly (Williams et al. 2008:117,122). Peripheral species included deer, and various rodents, rabbits, and birds - many of which were utilized by prehistoric and historic inhabitants (Lightfoot and Parrish 2009).

CULTURAL SETTING

Prehistory

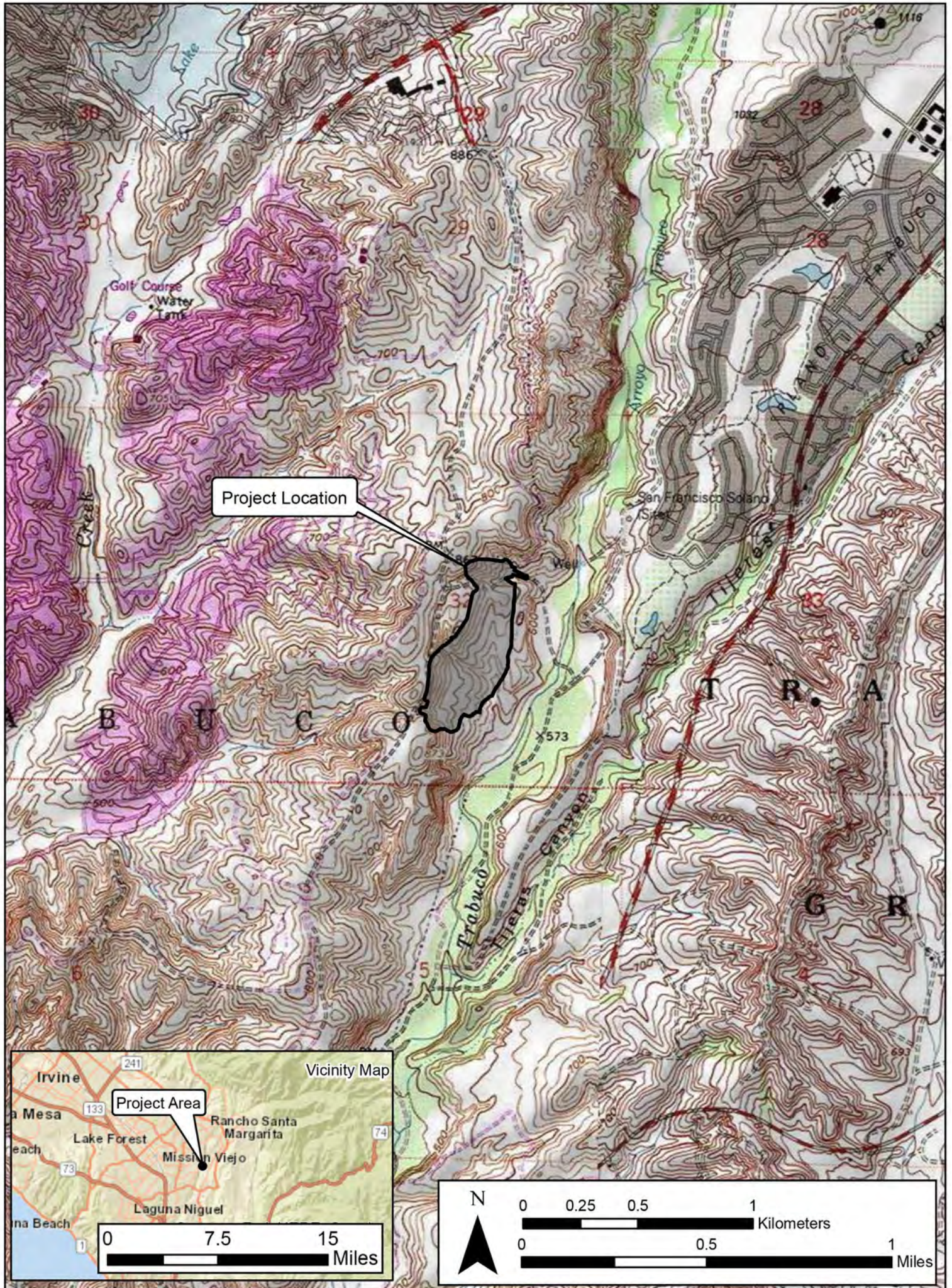
Various regional syntheses have been commonly utilized in the archaeological literature for southern California. The most widely cited include Wallace (1955) and Warren (1968 and 1986). Wallace defines four cultural horizons, each with characteristic local variations:

- Early Period (before 6000 B.C.)
- Milling Stone (6000 to 3000 B.C.)
- Intermediate (3000 B.C. to A.D. 500)
- Late Prehistoric (A.D. 500 to A.D. 1769).

Employing a more ecological model Warren (1968) defined three traditions, including:

- San Dieguito (pre 5500 B.C.)
- Encinitas (5500 B.C. to A.D. 600)
- Shoshonean (A.D. 600 to A.D. 1769).

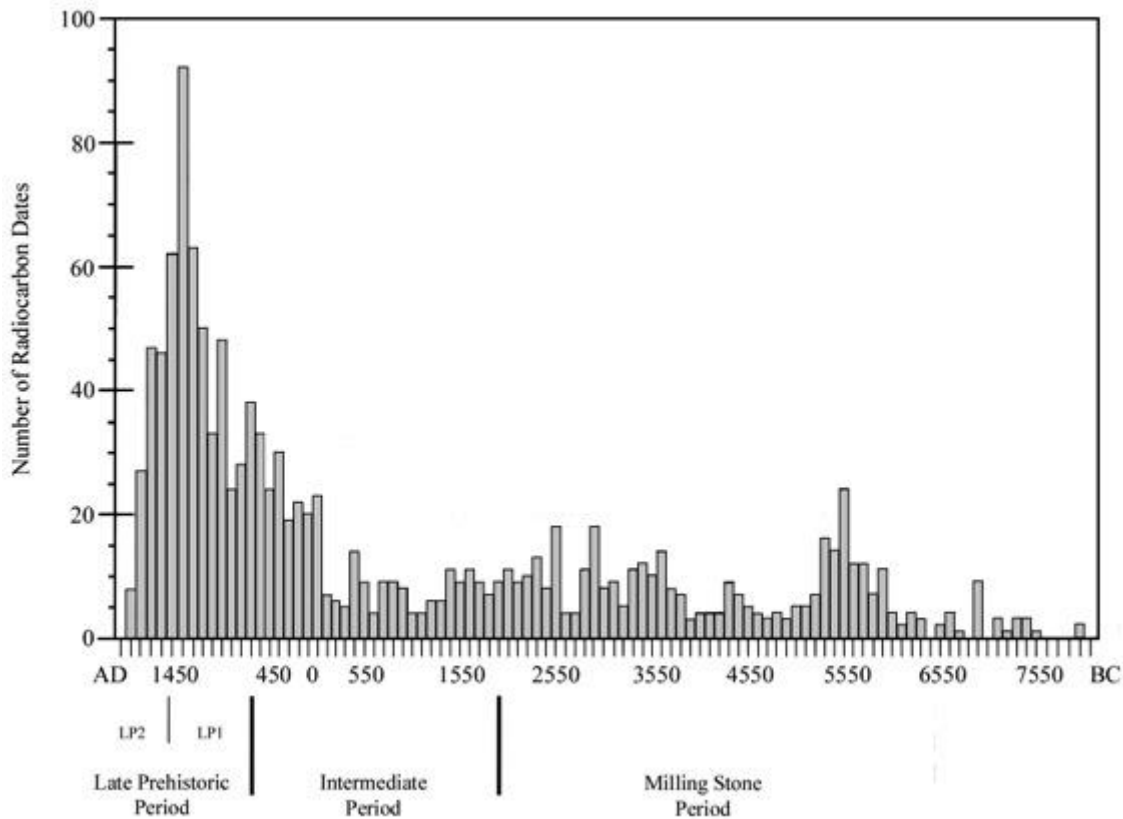
Relying on data from more desert-based groups Warren defined five periods in his 1986 study:



- Lake Mojave (8000 to 5000 B.C.)
- Pinto (5000 to 2000 B.C.)
- Gypsum (2000 B.C. to A.D. 500)
- Saratoga Springs (A.D. 500 to 1200)
- Protohistoric (A.D. 1200 to 1769).

Although these references have provided useful overviews for southern California, updated studies more specific to the prehistory of coastal southern California (see Arnold 1990, 1991, 1992, 1995; Arnold et al. 1997; Raab and Larson 1997) are relevant to the current project area. The current study is synthesized from Mason et al. (1997), and Koerper et al. (2002). This regional focus is considered vital to Orange County prehistory because of the wealth of reliably dated prehistoric sites recorded in area, ranging from 7550 B.C. to the late Late Prehistoric (Mason et al. 1997:35; Koerper et al. 2002:68). A temporal scheme has been formulated from data utilized by both studies, and is provided below in Table A.

Table A. Radiocarbon Dates/Periods from Sites in Orange County (Koerper et al. 2002:68)



Mason et al. (1997) combine data from six sites excavated during the Newport Coast Archaeological Project (NCAP) with climatic and biogeographical information collected within the greater Orange County area to address the importance of:

- terrestrial/marine vertebrates versus shell-fish/plant utilization by Millingstone populations
- significant population fluctuations during the Early to Middle Holocene
- settlement transition and other adaptive strategies at the end of the Middle Holocene
- issues of prehistoric lithic trade.

They conclude that Middle Holocene site expansion along the Orange County coast is the result of new habitats containing important prehistoric food sources that flourished due to stabilizing sea levels between five and six thousand years ago (Mason et al. 1997:58). These habitats particularly included kelp beds containing sheephead fish, and sandy and muddy substrates that encouraged proliferation of cockles, scallops, oysters, bat rays, and guitar fish -each of which has been found in significant numbers during this era at various sites within NCAP (Mason et al. 1997:40-41). During the late Holocene population increase resulting from access to these food sources as well as terrestrial resources allowed further expansion into Orange County's interior.

As prehistoric populations spread throughout the Orange County area, their tool types and site remains indicate two settlement strategies. The first, known as the forager model, enabled whole groups to mobilize between residential bases as part of a seasonal round. This was commonly practiced during the Millingstone and early Intermediate Period. During the late Intermediate Period and the early Late Prehistoric Period, a functional hierarchy of site types appear, containing multi-season residential bases, minor residential bases, and single gender specialized activity locations. This indicates the second model, known as the collector (or village) model, in which residential bases remain the same or seasonal, while specialized procurement parties are deployed to collect resources and bring them back to base (Mason et al. 1997:52, 56; see also Binford 1980, and Thomas 1983).

In addition to site data, Koerper et al. (2002) utilize information from wetland salinity, climatic and hydrologic conditions, and artificial and natural resource depletion studies which link "demographic dynamics to subsistence intensification, territoriality, violent behavior, trade, and the further elaboration of status hierarchies during the late Holocene in Orange County" (Koerper et al. 2002:63). This approach has underscored the importance of punctuated environmental events, such as the capricious coursing of local drainage systems often catalyzed by the commencement and/or termination of droughts (i.e. the Medieval Climatic Anomaly and the Little Ice Age). Having occurred within relatively short time frames, these events are posited to give rise to a model of dramatic cultural shift rather than one of gradualism, and have been confirmed by correlating radiocarbon dates utilized in the local prehistoric chronology (Table A).

Dramatic shift is particularly evident between ca. 2000 and 1000 B.C. when a decline in carbon-fourteen dates from the area indicated the disappearance of a population practicing a residential mobility pattern of foraging, the predominant adaptive strategy practiced during the mid-Holocene. The disappearance of this group is highly correlated with very dry conditions, as indicated by pollen studies (Koerper et al. 2002:79), and people do not reappear in this area in significant numbers until circa 1000 B.C., at which point fewer, more highly concentrated settlements appear. Some resource intensification is apparent during the ensuing generations, and by the beginning of the Late Prehistoric is confirmed by the

expanding use of shellfish recovered in context as far as six kilometers from its origin at Newport Bay. Resource intensification is often a sign of a shortage of preferred or customary resources brought about by a rise in population and/or other factors. Such a rise in population certainly occurred by A.D. 600, peaking circa A.D. 1300 (see Table A), and is correlated with the local advent of the bow and arrow, which may have been brought by Takic speakers from the Southwest (Koerper et al. 2002:80). Native Orange County populations began to decline during the late Late Prehistoric prior to any likely effects of European disease. Koerper et al. suggests that rather than exceeding the land's carrying capacity, this decline in the Orange County area was due to a failure of "food yields...to increase in proportion to the additional investments of energy expended in subsistence labor" (Koerper et al. 2002:80; see also Halstead and O'Shea 1989; Hayden 1990). This has been further supported by oral tradition, which suggests that people were driven to leave food procurement areas due to incongruities between population and resources (ibid), which gave rise to the patterns whose rudiments remained at the time of European contact.

Ethnography

The project site is situated within the traditional boundaries of the Juaneño (Ajachemem; see Boscana 1933, Bean and Shipek 1978, and Kroeber 1925). The term Juaneño derives from Mission San Juan Capistrano and refers to Takic speakers associated with that mission. Although early studies separated the Juaneño and Luiseño based on linguistic differences (White 1963:91), more recent work has purported that the two groups actually represent a single ethnic nationality (Bean and Shipek 1978:550). The Juaneño were originally studied using ethnography, particularly during the early 20th century, although their decimation through acculturation and disease has necessitated supplementing any social analysis with archaeological data (see Prehistory above). The Juaneño were semi-nomadic hunter-gatherers who subsisted by exploitation of seasonably available plant and animal resources. Plants utilized for food were heavily relied upon and included acorn-producing oaks, as well as seed-producing grasses and sage. Animal protein was commonly derived from rabbits and deer in inland regions, while coastal populations supplemented their diets with fish, shellfish, and marine mammals (Boscana 1933, Heizer 1968, Bean and Shipek 1978).

History

In Southern California, the historic era is generally divided into three periods: the Spanish or Mission Period (1769 to 1821), the Mexican or Rancho Period (1821 to 1848), and the American Period (1848 to present).

Spanish Period. The first European to pass through the area is thought to be a Spaniard called Father Francisco Garces. Having become familiar with the area, Garces acted as a guide to Juan Bautista de Anza, who had been commissioned to lead a group across the desert from a Spanish outpost in Arizona to set up quarters at the Mission San Gabriel in 1771 near what today is Pasadena (Beck and Haase 1974). Garces was followed by Alta California Governor Pedro Fages, who briefly explored the region in 1772 (Beck and Haase 1974).

Mexican Period. In 1821, Mexico overthrew Spanish rule and the missions began to decline. By 1833, the Mexican government passed the Secularization Act, and the missions, reorganized as parish churches, lost their vast land holdings, and released their neophytes (Beattie and Beattie 1974).

American Period. The American Period, 1848–Present, began with the Treaty of Guadalupe Hidalgo. In 1850, California was accepted into the Union of the United States primarily due to the population increase created by the Gold Rush of 1849. The cattle industry reached its greatest prosperity during the first years of the American Period. Mexican Period land grants had created large pastoral estates in California, and demand for beef during the Gold Rush led to a cattle boom that lasted from 1849–1855. However, beginning about 1855, the demand for beef began to decline due to imports of sheep from New Mexico and cattle from the Mississippi and Missouri Valleys. When the beef market collapsed, many California ranchers lost their ranchos through foreclosure. A series of disastrous floods in 1861–1862, followed by a significant drought further diminished the economic impact of local ranching. This decline combined with ubiquitous agricultural and real estate developments of the late 19th century, set the stage for diversified economic pursuits that have continued to proliferate to this day (Beattie and Beattie 1974; Cleland 1941).

PERSONNEL

David Brunzell, M.A., RPA acted as the Project Manager and Principal Investigator for the current study. BCR Consulting Staff Archaeologist Nicholas Shepetuk, B.A., conducted the cultural resources records search at the South Central Coastal Information Center (SCCIC) located at California State University, Fullerton. BCR Consulting Staff Archaeologist Nicholas Shepetuk completed the field assessment and excavation with BCR Consulting Staff Historian Dylan Williams, B.A. Mr. Brunzell authored the technical report with contributions from Mr. Shepetuk.

METHODS

Records Search

Prior to fieldwork, an archaeological records search was conducted at the SCCIC. This included a review of all recorded historic and prehistoric cultural resources, as well as a review of known cultural resources, and survey and excavation reports generated from projects completed within one mile of the project site. In addition, a review was conducted of the National Register of Historic Places (National Register), the California Register of Historical Resources (California Register), and documents and inventories from the California Office of Historic Preservation including the lists of California Historical Landmarks, California Points of Historical Interest, Listing of National Register Properties, and the Inventory of Historic Structures.

Fieldwork

An archaeological pedestrian field survey of the project site was conducted on August 30, 2019. The survey was conducted by walking parallel transects spaced approximately 15 meters apart across 100 percent of the accessible project site. Steep slopes were surveyed intuitively based upon the degree of access allowed by obstacles in the field. Soil exposures, including natural and artificial clearings were carefully inspected for evidence of cultural resources. Low surface visibility combined with a cultural resource identified (partially) within the project site during a previous assessments (see Cooley et al. 1979) necessitated additional survey, six vegetation clearing transects, seven shovel scrapes, and three shovel test pits (STPs). These were completed on October 23 and 24, 2019.

City personnel assisted in vegetation clearing in which six transects were mechanically cleared of vegetation across the entire property following contour lines, oriented northeast by

southwest. BCR Consulting crews walked these transects carefully inspecting the surface for evidence of cultural resources. Where a small portion of the previously recorded prehistoric site designated P-30-786 coincided with the project site (see Appendix D), seven shovel scrapes and two shovel test pits were excavated. During shovel scrapes, BCR Consulting personnel cleared a two square meter area of vegetation. The top five centimeters of soil were then excavated and sifted through 1/8-inch steel mesh to check for evidence of buried cultural resources. STPs were approximately 35 centimeters in diameter and were excavated at 20-centimeter intervals. Sediments were similarly screened and examined. Since no buried cultural remains were identified (see Results), the units were subjectively placed in areas exhibiting a strong likelihood for buried deposits based on surface observations.

RESULTS

Records Search

The records search revealed that six cultural resource studies have taken place resulting in the recording of 22 cultural resources within a one-mile radius of the project site. A very low-density prehistoric artifact scatter designated P-30-786 was previously identified partially within the project boundaries in 1979 (see Cooley et al. 1979). All of the previous studies have assessed the project site and one cultural resource has been previously recorded within its boundaries. The records search is summarized as follows:

Table B. Cultural Resources and Reports Located Within One Mile of the Project Site

USGS 7.5 Minute Quadrangle	Cultural Resources Within One Mile of Project Site	Studies Within One Mile of Project Site
<i>Canada Gobernadora, California</i> (1997)	P-30-36: Camp 36 OCAS (1 mile S) P-30-380: Prehistoric lithic scatter (3/4 mile W) P-30-461: Prehistoric lithic scatter (1 mile W) P-30-463: Prehistoric lithic scatter (1 mile SW) P-30-470: Prehistoric lithic scatter (1 mile SW) P-30-472: Prehistoric lithic scatter and rock feature (3/4 mile N) P-30-474: Prehistoric lithic scatter (1/2 mile N) P-30-621: Prehistoric lithic scatter (1/2 mile NW) P-30-784: Prehistoric lithic scatter (3/4 mile S) P-30-785: Prehistoric lithic scatter (1/2 mile S) P-30-786: Prehistoric artifact scatter (partially within project) P-30-875: Prehistoric lithic scatter (1/4 mile E) P-30-897: Prehistoric lithic scatter (1 mile S) P-30-898: Prehistoric lithic/trash scatter (3/4 mile S) P-30-899: Prehistoric lithic scatter (2/3 mile SE) P-30-900: Prehistoric lithic scatter (1/2 mile S)	OR582*, 584*, 928*, 2394*
<i>San Juan Capistrano, California</i> (1981)	P-30-871: Prehistoric lithic scatter (1 mile NE) P-30-874: Prehistoric lithic scatter (3/4 mile NE) P-30-876: Multicomponent, scatter and structures (1/3 mile E) P-30-1044: Prehistoric lithic scatter (2/3 mile NE) P-30-1045: Prehistoric lithic scatter (2/3 mile NE) P-30-1046: Prehistoric lithic scatter (3/4 mile NE)	OR286*, 584*, 928*, 1439*, 2394*

*Previously assessed a portion of the project site.

Fieldwork

During the field survey, Mr. Shepetuk and Mr. Williams carefully inspected the project site, and identified no cultural resources within its boundaries. Surface visibility was low due to the presence of dense native and non-native vegetation. The overgrowth combined with the previously recorded archaeological site (see Cooley et al. 1979; Appendix D) to prompt the vegetation clearing and subsurface test excavation. Additional survey in the denuded transects, and the excavated shovel scraps and STPs were negative. Therefore, prehistoric site P-30-786 is not considered to remain within the project site boundaries. Sediments ranged from gray to dark brown, dry, semi-compact, sandy clay, with relatively low gravel content. Some plastic and asphalt were discovered during excavations.

RECOMMENDATIONS

BCR Consulting conducted a Cultural Resources Assessment of the Lower Curtis Park Mass Grading Project in the Community of Mission Viejo, Orange County, California. The records search revealed that six cultural resource studies have taken place resulting in the recording of 22 cultural resources within a one-mile radius of the project site. All of the previous studies have assessed the project site and one cultural resource has been previously identified, partially within its boundaries. During the field survey and subsurface test excavation, BCR Consulting archaeologists did not identify any cultural resources (including prehistoric or historic archaeological sites or historic-period buildings) within the Lower Curtis Park Mass Grading Project Site. As a result, BCR Consulting recommends a finding of no impacts to historical resources under CEQA. However, since a prehistoric resource has been previously identified within the project site boundaries, the project site is considered sensitive for buried archaeological resources. Therefore, BCR Consulting recommends archaeological monitoring for any project-related excavations. The monitor should work under the supervision of a Cultural Resource Professional that meets the U.S. Secretary of the Interior Professional Qualification Standards for Archaeology. In the event of an archaeological discovery, the monitor would have the authority to temporarily divert construction excavation in the vicinity of the find until it can be evaluated for significance. In case of accidental discoveries of historic or prehistoric resources during project-related excavation when an archaeological monitor is not present, work should cease and a U.S. Secretary of the Interior Qualified Archaeologist should be notified to record and evaluate the find.

If human remains are encountered, State Health and Safety Code Section 7050.5 states that no further disturbance shall occur until the County Coroner has made a determination of origin and disposition pursuant to Public Resources Code Section 5097.98. The County Coroner must be notified of the find immediately. If the remains are determined to be prehistoric, the Coroner will notify the Native American Heritage Commission (NAHC), which will determine and notify a Most Likely Descendant (MLD). With the permission of the landowner or his/her authorized representative, the MLD may inspect the site of the discovery. The MLD shall complete the inspection within 48 hours of notification by the NAHC.

REFERENCES

Arnold, J.E.

1990 Lithic Resource Control and Economic Change in the Santa Barbara Channel Region. *Journal of California and Great Basin Anthropology* 12:112-127.

1991 Forward. In *Hunter-Gatherers of Early Holocene Coastal California*, edited by J. M. Erlandson and R.H. Colten. Perspectives in California Archaeology 1. Los Angeles: UCLA Institute of Archaeology.

1992 Complex Hunter-Gatherer-Fishers of Prehistoric California: Chiefs, Specialists, and Maritime Adaptations of the Channel Islands. *American Antiquity* 57:60-84.

1995 Transportation Innovation and Social Complexity Among Maritime Hunter-Gatherer Societies. *American Anthropologist* 97:733-747.

Arnold, J.E., E.L. Ambos, and Do. O. Larson

1997 Geophysical Surveys of Stratigraphically Complex Island California Sites: New Implications for Household Archaeology. *Antiquity* 71:157-168.

Bean, Lowell John, and Florence Shippek

1978 *California*, edited by R.F. Heizer. Handbook of North American Indians, Vol. 8, W.C. Sturtevant, general editor, Smithsonian Institution. Washington, D.C.

Beattie, George W., and Helen P. Beattie

1974 *Heritage of the Valley: San Bernardino's First Century*. Biobooks. Oakland.

Beck, Warren A., and Ynez D. Haase

1974 *Historical Atlas of California*. Oklahoma City: University of Oklahoma Press.

Binford, L.

1980 Willow Smoke And Dog's Tails: Hunter-Gatherer Settlement Systems and Archaeological Site Formation. *American Antiquity* 45: 1-17.

Boscana, Father Geronimo

1933 *Chinigchinich: A Revised and Annotated Version of Alfred Robinson's Translation of Father Geronimo Boscana's Historical Account of the Belief, Usages, Customs and Extravagancies of the Indians of this Mission of San Juan Capistrano Called the Acagchemem Tribe*. Fine Arts Press, Santa Ana.

Cleland, Robert Glass

1941 *The Cattle on a Thousand Hills—Southern California, 1850-80*. Huntington Library. San Marino, California.

Cooley, T., L. Sullivan, and D. Digua

1979 Site Record for P-30-786. On File at the South Central Coastal Information Center. Fullerton, California.

Heizer, Robert F.

1968 Introduction and Notes. In *The Indians of Los Angeles County: Hugo Reid's Letters of 1852*, edited by Robert F. Heizer. Southwest Museum, Los Angeles.

Jaeger, Edmund C., and Arthur C. Smith

1971 *Introduction to the Natural History of Southern California*. California Natural History Guides: 13. University of California Press. Los Angeles

Johnston, B.E.

1962 *California's Gabrielino Indians*. Southwest Museum, Los Angeles.

Koerper, Henry C., Roger D. Mason, and Mark L. Peterson

2002 Complexity, Demography, and Change in Late Holocene Orange County. *Catalysts to Complexity, Late Holocene Societies of the California Coast* edited by Jon M. Erlandson and Terry L. Jones. Cotsen Institute of Archaeology, UCLA.

Kroeber, Alfred L.

1925 *Handbook of the Indians of California*. Bureau of American Ethnology Bulletin No. 78. Washington D.C.: Smithsonian Institution. Dover Publications. New York.

Lightfoot, Kent G., Otis Parrish

2009 *California Indians and Their Environment, an Introduction*. University of California Press, Berkeley.

Mason, Roger D., Henry C. Koerper, and Paul E. Langenwaller II

1997 *Archaeology of the California Coast During the Middle Holocene* edited by Jon M Erlandson and Michael Glassow. Institute of Archaeology, University of California, Los Angeles.

Oates, N.D.

1960 Geology of the Western Portion of the Canada Gobernadora Quadrangle, Orange County, California. A Thesis Presented to the Faculty of the Graduate School University of Southern California.

Raab, L.M. and D.O. Larson

1997 Medieval Climatic Anomaly and Punctuated Cultural Evolution in Coastal Southern California. *American Antiquity* 62:319-336.

Stadum, Carol

1982 *An Introduction to Orange County's Colorful Geologic History*. Orange County Historical Society.

Thomas, D.H.

1983 The Archaeology of Monitor Valley I: Epistemology. New York: American Museum of Natural History Anthropological Papers 58f1).

Wallace, William J.

1955 Prehistoric Cultural Development in the Southern California Deserts. *American Antiquity* 28(2):172-180.

Warren, Claude N.

1968 Cultural Tradition and Ecological Adaptation on the Southern California Coast. In: Archaic Prehistory in the Western United States, C. Irwin-Williams, editor. Eastern New Mexico University Contributions in Archaeology, Vol. 1, No. 3, pp. 1-4.

1986 The Prehistory of the Southwestern Great Basin. In *Handbook of the North American Indians, Vol. 11, Great Basin*, edited by W.L. d'Azevedo, pp.183-193. W.C. Sturtevant, General Editor. Smithsonian Institution, Washington D.C.

White, Raymond C.

1963 Luiseño Social Organization. *University of California Publications in American Archaeology and Ethnology* 48(2):91-94. Berkeley, California.

Williams, Patricia, Leah Messinger, Sarah Johnson

2008 *Habitats Alive! An Ecological Guide to California's Diverse Habitats*. California Institute for Biodiversity, Claremont, California.

United States Geological Survey

1997 *Gobernadora Canada, California* 7.5-minute topographic quadrangle map.

APPENDIX A
NATIVE AMERICAN SACRED LANDS FILE SEARCH



NATIVE AMERICAN HERITAGE COMMISSION
Cultural and Environmental Department
1550 Harbor Blvd., Suite 100
West Sacramento, CA 95691
Phone: (916) 373-3710
Email: nahc@nahc.ca.gov
Website: <http://www.nahc.ca.gov>
Twitter: @CA_NAHC

September 13, 2019

Dylan Williams
BCR Consulting

VIA Email to: Dylan.r.will@gmail.com

RE: Lower Curtis Park Mass Grading Project, Orange County

Dear Mr. Williams:

A record search of the Native American Heritage Commission (NAHC) Sacred Lands File (SLF) was completed for the information you have submitted for the above referenced project. The results were negative. However, the absence of specific site information in the SLF does not indicate the absence of cultural resources in any project area. Other sources of cultural resources should also be contacted for information regarding known and recorded sites.

Attached is a list of Native American tribes who may also have knowledge of cultural resources in the project area. This list should provide a starting place in locating areas of potential adverse impact within the proposed project area. I suggest you contact all of those indicated; if they cannot supply information, they might recommend others with specific knowledge. By contacting all those listed, your organization will be better able to respond to claims of failure to consult with the appropriate tribe. If a response has not been received within two weeks of notification, the Commission requests that you follow-up with a telephone call or email to ensure that the project information has been received.

If you receive notification of change of addresses and phone numbers from tribes, please notify the NAHC. With your assistance, we can assure that our lists contain current information. If you have any questions or need additional information, please contact me at my email address: steven.quinn@nahc.ca.gov.

Sincerely,

A handwritten signature in blue ink that reads 'Steven Quinn'.

Steven Quinn
Associate Governmental Program Analyst

Attachment

**Native American Heritage Commission
Native American Contact List
Orange County
9/13/2019**

**Agua Caliente Band of Cahuilla
Indians**

Jeff Grubbe, Chairperson
5401 Dinah Shore Drive Cahuilla
Palm Springs, CA, 92264
Phone: (760) 699 - 6800
Fax: (760) 699-6919

**La Jolla Band of Luiseno
Indians**

Fred Nelson, Chairperson
22000 Highway 76 Luiseno
Pauma Valley, CA, 92061
Phone: (760) 742 - 3771

**Agua Caliente Band of Cahuilla
Indians**

Patricia Garcia-Plotkin, Director
5401 Dinah Shore Drive Cahuilla
Palm Springs, CA, 92264
Phone: (760) 699 - 6907
Fax: (760) 699-6924
ACBCI-THPO@aguacaliente.net

Pala Band of Mission Indians

Shasta Gaughen, Tribal Historic
Preservation Officer
PMB 50, 35008 Pala Temecula Cupeno
Rd. Luiseno
Pala, CA, 92059
Phone: (760) 891 - 3515
Fax: (760) 742-3189
sgaughen@palatribe.com

**Juaneno Band of Mission
Indians**

Sonia Johnston, Chairperson
P.O. Box 25628 Juaneno
Santa Ana, CA, 92799
sonia.johnston@sbcglobal.net

Pauma Band of Luiseno Indians

Temet Aguilar, Chairperson
P.O. Box 369 Luiseno
Pauma Valley, CA, 92061
Phone: (760) 742 - 1289
Fax: (760) 742-3422
bennaecalac@aol.com

**Juaneno Band of Mission
Indians Acjachemen Nation -
Belardes**

Joyce Perry, Tribal Manager
4955 Paseo Segovia Juaneno
Irvine, CA, 92603
Phone: (949) 293 - 8522
kaamalam@gmail.com

**Pechanga Band of Luiseno
Indians**

Mark Macarro, Chairperson
P.O. Box 1477 Luiseno
Temecula, CA, 92593
Phone: (951) 770 - 6000
Fax: (951) 695-1778
epreston@pechanga-nsn.gov

**Juaneno Band of Mission
Indians Acjachemen Nation**

Matias Belardes, Chairperson
32161 Avenida Los Amigos Juaneno
San Juan Capistrano, CA, 92675
Phone: (949) 293 - 8522
kaamalam@gmail.com

**Pechanga Band of Luiseno
Indians**

Paul Macarro, Cultural Resources
Coordinator
P.O. Box 1477 Luiseno
Temecula, CA, 92593
Phone: (951) 770 - 6306
Fax: (951) 506-9491
pmacarro@pechanga-nsn.gov

**Juaneno Band of Mission
Indians Acjachemen Nation -
Romero**

Teresa Romero, Chairperson
31411-A La Matanza Street Juaneno
San Juan Capistrano, CA, 92675
Phone: (949) 488 - 3484
Fax: (949) 488-3294
tromero@juaneno.com

This list is current only as of the date of this document. Distribution of this list does not relieve any person of statutory responsibility as defined in Section 7050.5 of the Health and Safety Code, Section 5097.94 of the Public Resource Section 5097.98 of the Public Resources Code.

This list is only applicable for contacting local Native Americans with regard to cultural resources assessment for the proposed Lower Curtis Park Mass Grading Project, Orange County.

**Native American Heritage Commission
Native American Contact List
Orange County
9/13/2019**

Rincon Band of Luiseno Indians

Bo Mazzetti, Chairperson
One Government Center Lane Luiseno
Valley Center, CA, 92082
Phone: (760) 749 - 1051
Fax: (760) 749-5144
bomazzetti@aol.com

**Soboba Band of Luiseno
Indians**

Scott Cozart, Chairperson
P. O. Box 487 Cahuilla
San Jacinto, CA, 92583 Luiseno
Phone: (951) 654 - 2765
Fax: (951) 654-4198
jontiveros@soboba-nsn.gov

Rincon Band of Luiseno Indians

Jim McPherson, Tribal Historic
Preservation Officer
One Government Center Lane Luiseno
Valley Center, CA, 92082
Phone: (760) 749 - 1051
Fax: (760) 749-5144
vwhipple@rincontribe.org

**San Luis Rey Band of Mission
Indians**

San Luis Rey, Tribal Council
1889 Sunset Drive Luiseno
Vista, CA, 92081
Phone: (760) 724 - 8505
Fax: (760) 724-2172
cjmojado@slrmissionindians.org

**San Luis Rey Band of Mission
Indians**

1889 Sunset Drive Luiseno
Vista, CA, 92081
Phone: (760) 724 - 8505
Fax: (760) 724-2172
cjmojado@slrmissionindians.org

**Soboba Band of Luiseno
Indians**

Joseph Ontiveros, Cultural
Resource Department
P.O. BOX 487 Cahuilla
San Jacinto, CA, 92581 Luiseno
Phone: (951) 663 - 5279
Fax: (951) 654-4198
jontiveros@soboba-nsn.gov

This list is current only as of the date of this document. Distribution of this list does not relieve any person of statutory responsibility as defined in Section 7050.5 of the Health and Safety Code, Section 5097.94 of the Public Resource Section 5097.98 of the Public Resources Code.

This list is only applicable for contacting local Native Americans with regard to cultural resources assessment for the proposed Lower Curtis Park Mass Grading Project, Orange County.

APPENDIX B
PROJECT PHOTOGRAPHS



Photo 1: Project Site Overview



Photo 2: Project Site Overview



Photo 3: Sample Shovel Test Pit



Photo 4: Sample Shovel Scrape at Surface

APPENDIX C
PALEONTOLOGICAL OVERVIEW



September 3, 2019

BRC Consulting, LLC
Dylan Williams
505 West 8th Street
Claremont, CA 91711

Dear Mr. Williams,

This letter presents the results of a record search conducted for the Lower Curtis Park Mass Grading Project in Mission Viejo, Orange County, California. The project site is located east of Olympiad Road in the eastern portions of Robert A. Curtis Park in an unsectioned unit of Township 6 South, and Range 7 West, on the San Juan Capistrano USGS 7.5 minute quadrangle.

The geologic units underlying this project are mapped entirely as young alluvial landslide deposits dating from the late Pleistocene to Holocene epochs (Morton & Miller, 2006). Pleistocene alluvial units are considered to be of high paleontological sensitivity and value. The Western Science Center does not have localities within the project area or within a 1 mile radius, but does have numerous localities associated with similarly mapped sediments throughout Southern California. Due to the limited number of fossil localities in the Western Science Center's database for Orange County, additional record searches may be required to fully understand to proximity of fossil localities to the project area.

Any fossil specimen recovered from the Lower Curtis Park Mass Grading Project would be scientifically significant. Excavation activity associated with the development of the project area would impact the paleontologically sensitive Pleistocene alluvial units and it is the recommendation of the Western Science Center that a paleontological resource mitigation program be put in place to monitor, salvage, and curate any recovered fossils associated with the study area.

If you have any questions, or would like further information, please feel free to contact me at dradford@westerncentermuseum.org

Sincerely,

A handwritten signature in black ink, appearing to read 'Darla Radford', is written over a light blue horizontal line.

Darla Radford
Collections Manager

**CONFIDENTIAL
APPENDIX D**

DPR 523 FORM

*Recorded by: Nick Shepetuk and Dylan Williams *Date: August 30, October 23-24, 2019 Continuation Update

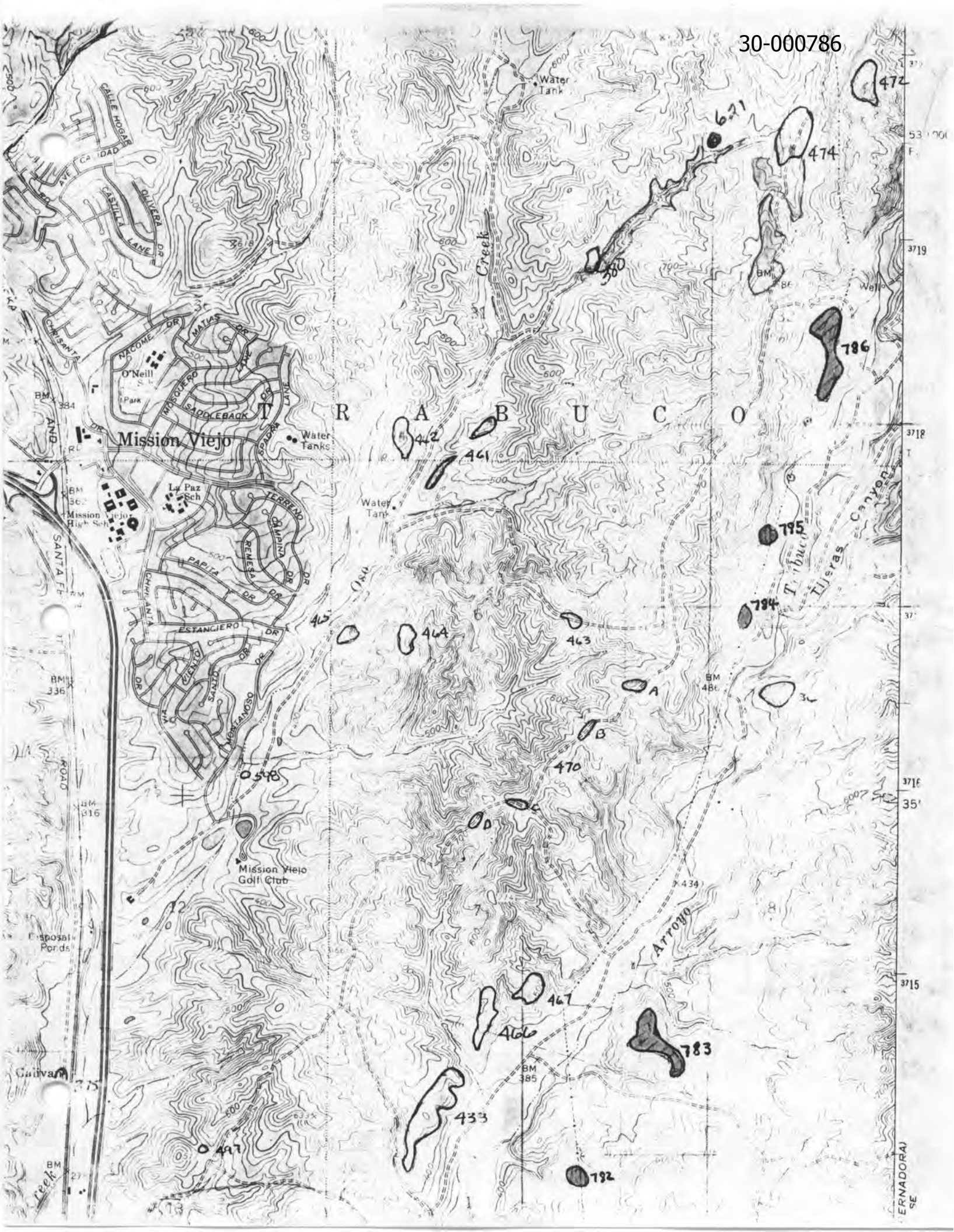
This resource was originally recorded by T. Cooly, L. Sullivan, and D. Digua in 1979 as six metate fragments, three manos, four cores, and three flakes scattered over an area of 400 x 150 meters.

BCR Consulting revisited the site location on August 30, October 23, and October 24 and found no remnants of the resource. Attempts at discovery included vegetation clearing, systematic survey, shovel scrapes, and shovel test pits.

MAPPED

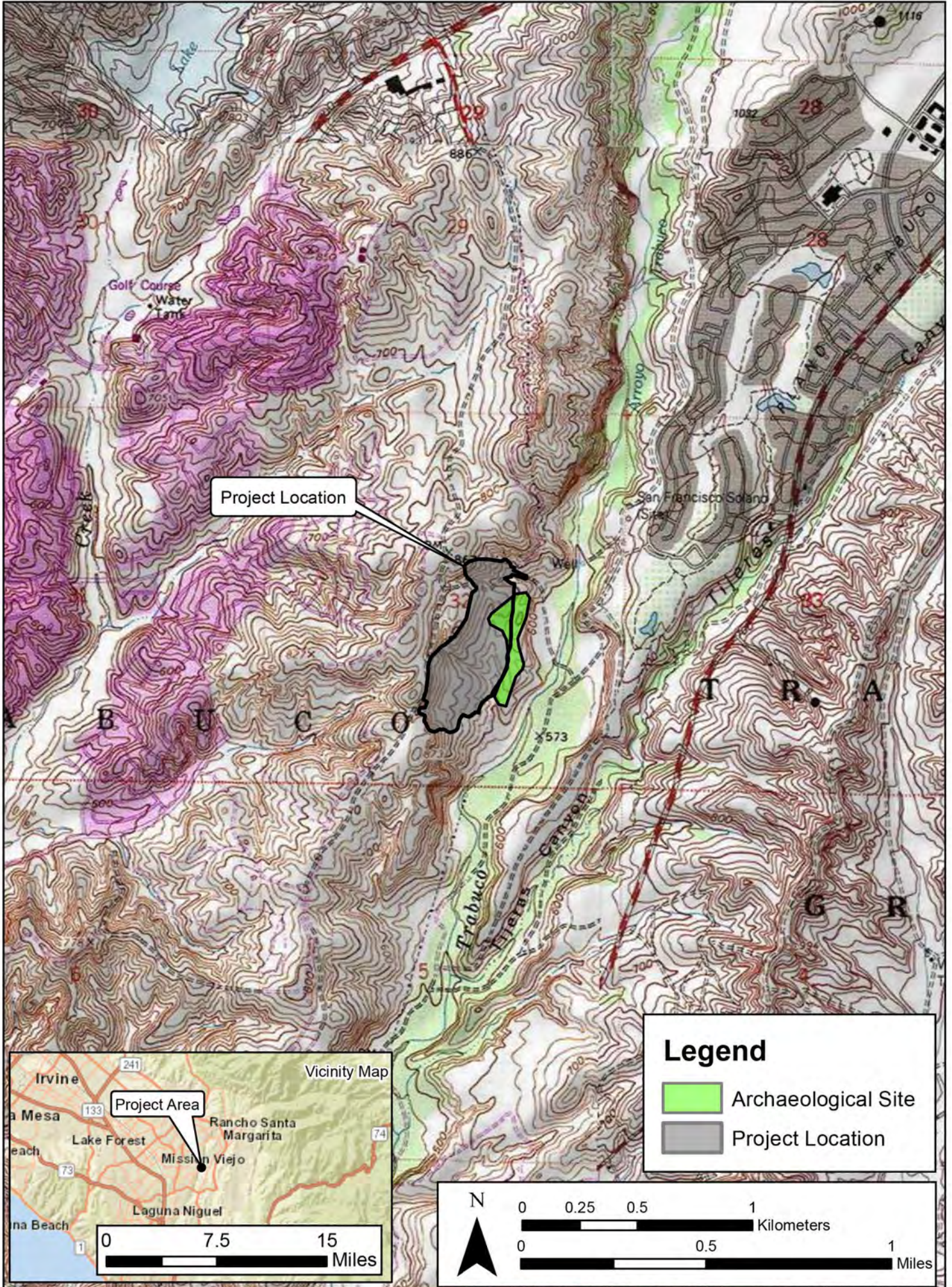
ARCHAEOLOGICAL SITE SURVEY RECORD

1. Site CA-Ora-786 2. Map San Juan Capistrano, Quad 3. County Orange
4. Twp. 6S Range 7W : NW $\frac{1}{4}$ of SE $\frac{1}{4}$ of Sec. 32
U.S.G.S.
5. Location Southern California Edison Tower on Site.
U.T.M. 41651848.
6. On contour elevation 640-700'
7. Previous designations for site none
8. Owner _____ 9. Address _____
10. Slope a) degrees 30⁰ b) direction South and West
11. Description of site Scatter of millingstone artifacts on low knoll just above
Trabuco Stream.
12. Area 400x150m 13. Depth 30-40 cm 14. Height 60' above stream
- Vegetation Grasses, cactus, sage. 16. Nearest water Trabuco Arroyo
17. Soil of site lt. colored loam 18. Surrounding soil type same
19. Previous excavation none
20. Cultivation Yes, disced 21. Erosion minimal
22. Buildings, roads, etc. Graded roads and S.C.E. Tower Pad on Site
23. Artifacts/Ecofacts 6 metate fragments, 3 manos, 4 cores, 3 flakes
- 23a Housepits none observed 23b. Petroglyphs none
- 23c Others Oaks adjacent to site on East.
24. Features none observed
25. Burials none observed
26. Remarks Most of the artifactual materials were in disturbed areas.
- Published References none
28. Accession No. _____ 29. Sketch Map Xerox U.S.G.S.
T. Cooley
30. Date 1-19-79 31. Recorded by L. Sullivan 32. Photos by _____
D. Digua



**CONFIDENTIAL
APPENDIX E**

EXHIBIT DEPICTING P-30-786 OVER PROJECT BOUNDARY



Legend

-  Archaeological Site
-  Project Location

N

0 0.25 0.5 1 Kilometers

0 0.5 1 Miles

Project Location Site
Lower Curtis Park Mass Grading Project
Figure 1
Reference: ESRI; USGS Quad: San Juan Capistrano (1981), California

Phil Martin & Associates