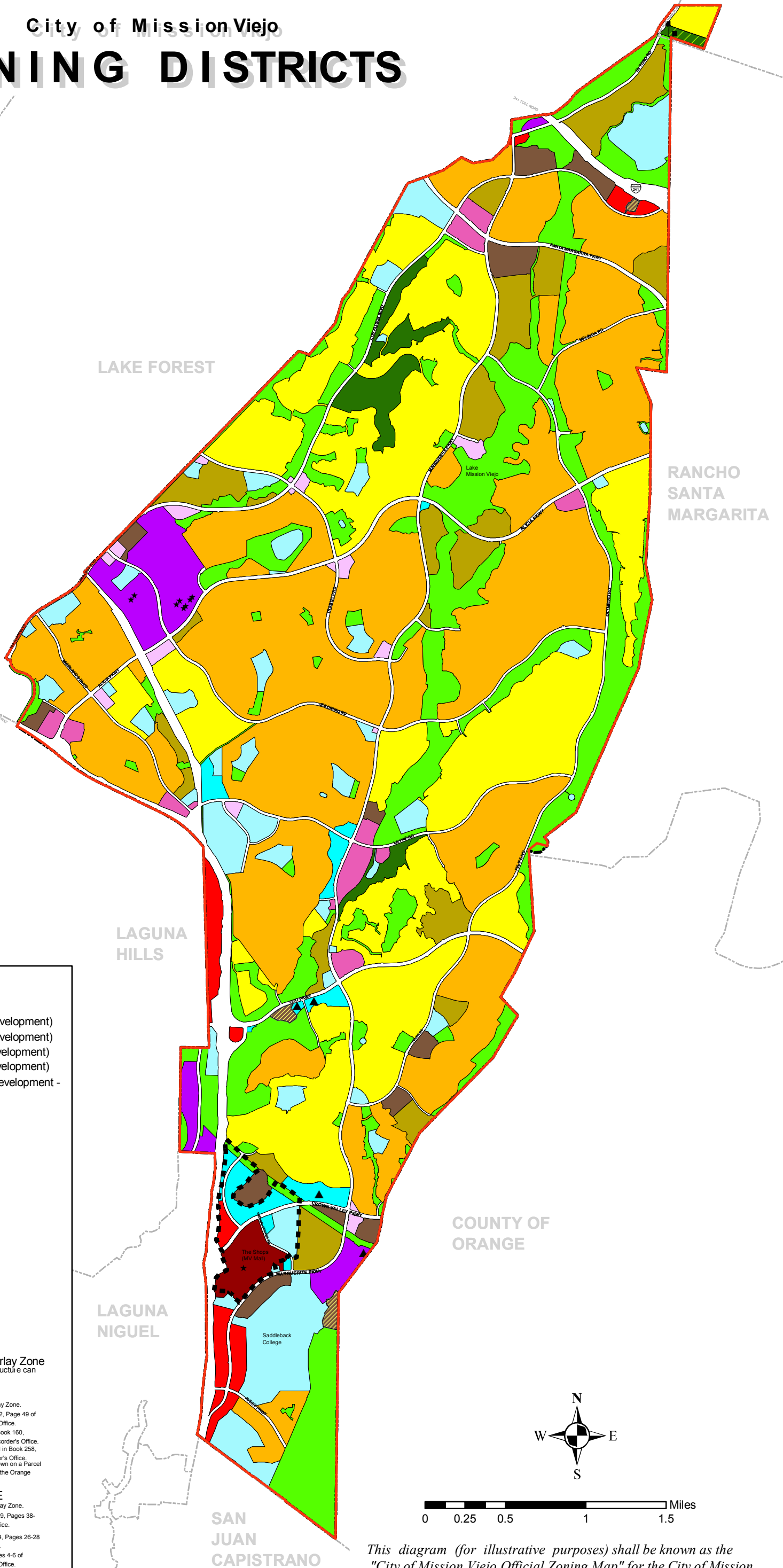




# City of Mission Viejo ZONING DISTRICTS



## LEGEND

### RESIDENTIAL

- RPD 3.5 (Residential Planned Development)
- RPD 6.5 (Residential Planned Development)
- RPD 14 (Residential Planned Development)
- RPD 30 (Residential Planned Development)
- RPD 30A (Residential Planned Development - Affordable)

### COMMERCIAL

- CN (Commercial Neighborhood)
- CC (Commercial Community)
- CH (Commercial Highway)
- CR (Commercial Regional)

### OFFICE

- OP (Office/Professional)

### INDUSTRIAL

- BP (Business Park/Industrial)

### OTHER

- R (Recreation)
- OS (Open Space)
- CF (Community Facility)

### BOUNDARIES

- City of Mission Viejo
- Commercial Intensive Height Overlay Zone  
Allows for more intensive projects when infrastructure can support such development

### ADULT BUSINESS OVERLAY ZONE

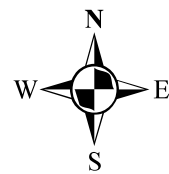
- Legal description of properties located within the Adult Business Overlay Zone.
- ★ Lots 15 & 26 of Tract No. 7024 as recorded in Book 282, Page 49 of Miscellaneous Maps in the Orange County Recorder's Office.
  - ★ Parcels 20 & 27 of Parcel Map 79-142 as recorded in Book 160, Pages 45-46 of Parcel Maps in the Orange County Recorder's Office.
  - ★ Parcels 1, 2, 9, & 10 of Parcel Map 89-132 as recorded in Book 258, Page 24 of Parcel Maps in the Orange County Recorder's Office.
  - ★ The Wall building located on Parcels 1, 2, 3, & 4 as shown on a Parcel Map recorded in Book 102, Page 37 of Parcel Maps in the Orange County Recorder's Office.

### SENIOR HOUSING OVERLAY ZONE

- Legal description of properties located within the Senior Housing Overlay Zone.
- ▲ Parcel 1 as shown on a Parcel Map recorded in Book 89, Pages 38-39 of Parcel Maps in the Orange County Recorder's Office.
  - ▲ Parcel 4 of Parcel Map 81-147 as recorded in Book 164, Pages 26-28 of Parcel Maps in the Orange County Recorder's Office.
  - ▲ Lot 1 of Tract No. 14627 as recorded in Book 703, Pages 4-6 of Miscellaneous Maps in the Orange County Recorder's Office.
  - ▲ Lot 1 of Tract No. 12795 as recorded in Book 572, Pages 13-17 of Miscellaneous Maps in the Orange County Recorder's Office.

### ESTATE RESIDENTIAL OVERLAY ZONE

- Description of properties located within the Overlay Zone.
- Parcel 21 and 41 as shown in Book 856, Page 06 of the Assessor Parcel Maps in the Orange County Assessor Office.



*This diagram (for illustrative purposes) shall be known as the "City of Mission Viejo Official Zoning Map" for the City of Mission Viejo. It was adopted by Ordinance No. 07-259 by the City of Mission Viejo City Council on September 4, 2007.*